

Hydraulic Pneumatic Services Ltd
Unit 17,
King Street Trading Estate,
Middlewich, Cheshire,
CW10 9LF (UK)
Tel: +44 (0)1606 835725
Fax: +44 (0)1606 737358
www.pressure-pumps.co.uk

Trojan

Airhydropumps Type 'AS & AD'

Produced specifically to fill the gap left by the obsolete Madan Single and Double Acting Airhydropumps. Their many uses arise from the need for a high output per stroke and steady pressure rises not achievable with smaller pumps.

The "NEW GENERATION" AIRHYDROPUMP

Following the standards set by the original Madan Airhydropumps these "New Generation" pumps have over 100 years of hydraulic engineering experience built into them.

With wetted parts in stainless steel as standard and only the best materials and components used in their construction these pumps have come to represent the ultimate in quality.

The long steady pulses and consequent steady rise in the system pressure make them the ideal pump for many applications.

ATEX II, Cat. 2, GD T5



SINGLE ACTOR
Type 'AS'

DOUBLE ACTOR
Type 'AD'

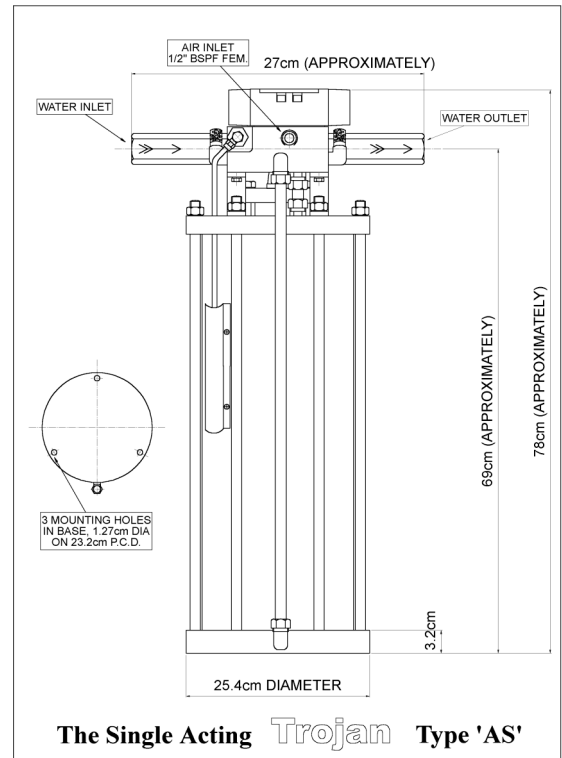
AVAILABLE IN SINGLE AND DOUBLE ACTING VERSIONS
DETAILS ON REQUEST

Airhydropumps

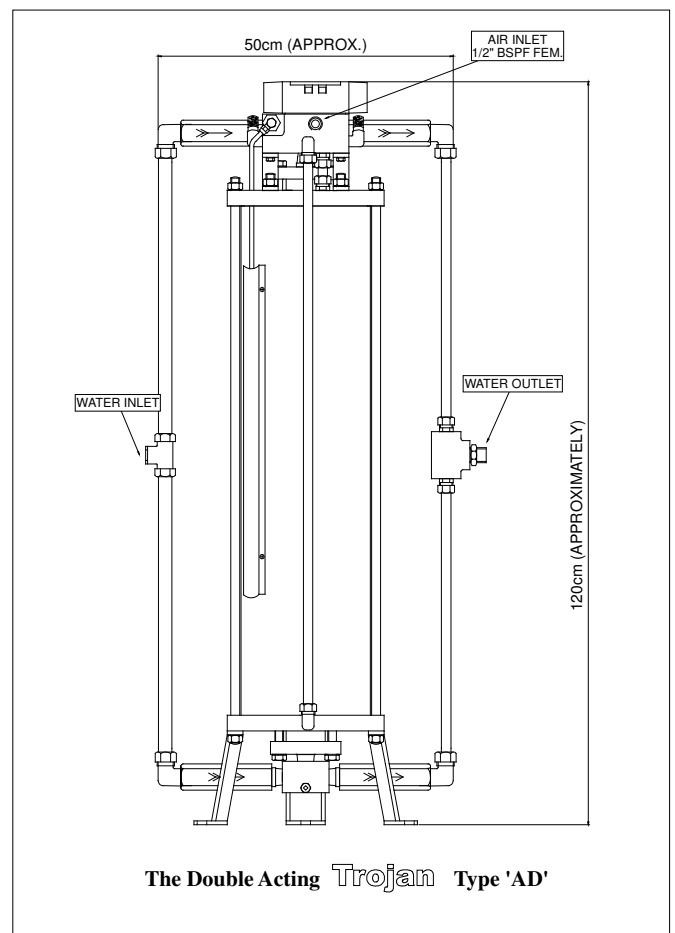
Robust and time-proved

Principally designed for the pressure test market, these Single and Double Acting Airhydropumps are the result of a long period of continued development based on many years of experience. This latest version has all the best characteristics of the earlier pumps with all the advantages of modern seal types and materials.

With wetted parts in stainless steel and no external moving parts, along with high quality, Hard Chromium plated stainless steel hydraulic rams and hard anodised Aluminium air cylinders these pumps offer long service and reliability.



- ❑ Available in various air to hydraulic ratios.
- ❑ Suitable for pumping water, oil and a wide range of fluids.
- ❑ Automatic stall against a closed outlet, maintaining pressure with no air consumption, automatic re-start.
- ❑ Stainless Steel wetted parts. (Except inlet pipework on D/A pump which is Brass/Copper; Stainless Steel available as an option)
- ❑ Any fixed or portable compressed air source up to 8 bar.
- ❑ Infinitely variable capacity and discharge pressure through simple regulation of the air supply.
- ❑ Both Single Acting and Double Acting versions available.



Hydraulic Pneumatic Services Ltd, Unit 17, King St Trading Estate,
Middlewich, Cheshire CW10 9HJ (UK)

Tel: +44 (0)1606 835725 Fax: +44 (0)1606 737358 www.pressure-pumps.co.uk